

# Scrubber Level Control System (SLS)

## Automatic Level Control for Gas Scrubber Applications

The FW Murphy Gas Compressor Scrubber Level System

The system provides for liquid control in gas scrubber applications by dumping liquids to drain and protect compressors with high liquid level switch. Wetted metal parts are made to survive constant use in corrosive environments.

### Filter Regulator and Gage

Instrument-quality  
 Air/Gas supply

### Pneumatic Level Control

Float-actuated level snap-acting switch controls pneumatic pressure to open and close Dump Valve. LS200NDVOR: Dump Valve Operator, pressure regulator and pressure indicating gage.

### High Level Shutdown Switch

Float-actuated level switches to alarm and/or shutdown the equipment. LS200 and MLS-020 models available. Class 1, Division 1.

MLS / Electric models wired  
 to control panel

### Pneumatic Dump Valves

Two piece union design with manual valve operator allows soft plug and hard seat to be replaced without disassembling outlet piping or scrubber pipe connection. Diaphragm-actuated valves operate on 30-70 psi (207-483 kPa: 2-5 bar).

You Save Money By Purchasing The SLS System  
 Which Includes the Following:

- **LS200, MLS-020\*** High Level Shutdown Switch
- **DVU\*\*** Pneumatic Dump Valve
- **LS200NDVOR** Pneumatic Level Control with:
- **Filter Regulator with Gage**

*For detailed information on Level Switches and  
 Dump Valves visit [www.fwmurphy.com](http://www.fwmurphy.com).*

\* Choose model using the How To Order matrix.

\*\*Specify Dump Valve model when ordering.

### Service Tip

The Gage and Filter/Regulator on the LS200NDVOR help keep the control medium clean and dry. It also allows operator to adjust pressure to recommended level of 30-70 psig. The Gage and Filter/Regulator are recommended to help increase system life and trouble-free operation.

### Level Switches

- Designed for Harsh Gas Compressor Scrubber Applications
- Stainless Steel Float: Specific gravity varies by model and configuration, see Specific Gravity.
- For Separators/Scrubbers rated for up to 2000 psi (13.8 MPa) [138 bar] Working Pressure
- Electric and Pneumatic Models Available

### Dump Valve Operator/ Dump Valve

- Hex Union Allows Plug and Seat Replacement Without Piping Removal
- Operates on 30-70 psi (207-483 kPa) [2.07-4.83 bar] Control Pressure
- Manual Valve Operator

## Specific Gravity

Minimum Allowable Specific Gravity			
Model	Float Extension Length (inch)	Pressure (psi)	Specific Gravity
LS200	0	2000	0.55
	1		0.7
LS200NDVO	0	2000	0.63
	1		0.73
MLS-020	0	2000	0.5
	1		0.65

## How To Order

Approximate Shipping of SLS2120 model

Weight: 19 lb. 6 oz. (8.7 kg)

Dimensions: (w x h x d) 15 x 15 x 12 in. (381 x 381 x 305 mm)

## SLS

The SLS Kits Include LS200, LS200NDVO and a DVU Valve.

<b>SLS150</b>		-	<b>LR</b>			
				Options		
				<b>Blank</b> = Include Filter/ Regulator		
				<b>LR</b> = Less Regulator		
Model	Dump Valve	Inlet	Outlet	Trim Size	Maximum Working Pressure	
<b>SLS150</b>	DVU150	1" NPT	1/2" NPT	0.359 IN. (9 MM)	1800 psi	
<b>SLS175</b>	DVU175	1" NPT	3/4" NPT	0.359 IN. (9 MM)	1800 psi	
<b>SLS2120</b>	DVU2120	2" NPT	1" NPT	0.436 IN. (11 MM)	2000 psi	

## MSLS

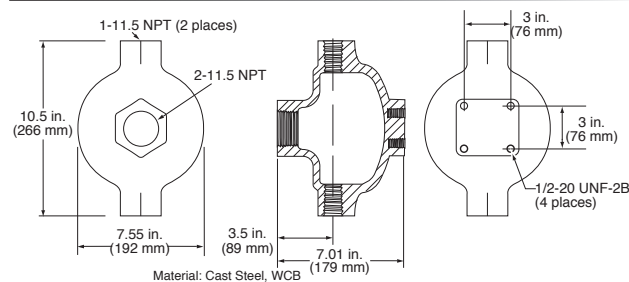
The MSLS Kits Include MLS-020, LS200NDVO and a DVU Valve.

<b>MSLS150</b>		-	<b>LR</b>	<b>TF</b>		
				Options		
				<b>Blank</b> = Include Filter/ Regulator		
				<b>LR</b> = Less Regulator		
Model	Dump Valve	Inlet	Outlet	Trim Size	Maximum Working Pressure	
<b>MSLS150</b>	DVU150	1" NPT	1/2" NPT	0.359 IN. (9 MM)	1800 psi	
<b>MSLS175.5*</b>	DVU175	1" NPT	3/4" NPT	0.359 IN. (9 MM)	1800 psi	
<b>MSLS175</b>	DVU175	1" NPT	3/4" NPT	0.359 IN. (9 MM)	1800 psi	
<b>MSLS2120</b>	DVU2120	2" NPT	1" NPT	0.436 IN. (11 MM)	2000 psi	

\*Substitutes L1200NDVO for LS200NDVO for 0.5 specific gravity applications

## Accessories

### Float Chamber 15051098

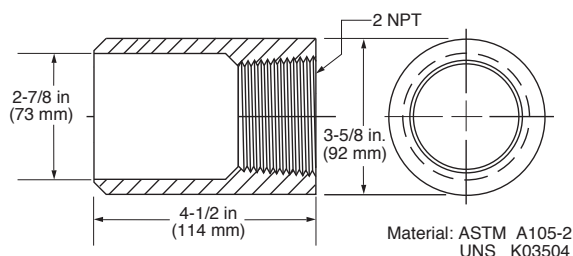


Operating Pressure: 2000 psi (13.8 MPa) [138 bar]

Operating Temperature: 400 deg F (204 deg C)

Shipping Weight: 32 lb. (14.5 kg)

### Weld Collar (LS200 only) 15050375

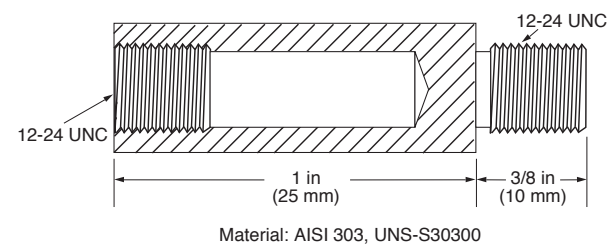


Operating Pressure: 2000 psi (13.8 MPa) [138 bar]

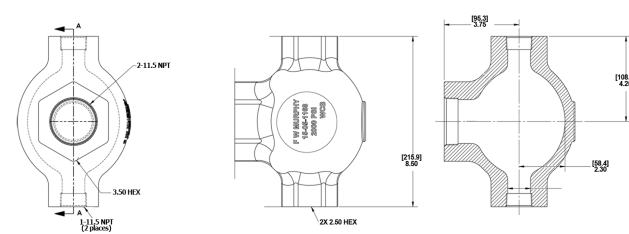
Operating Temperature: 400 deg F (204 deg C)

Shipping Weight: 6 lb. (2.7 kg)

### Float Shaft Extension 15000478



### Series 100 Float Chamber 15700799



Operating Pressure: 2000 psi (13.8 MPa) [138 bar]

Operating Temperature: 400 deg F (204 deg C)

Shipping Weight: 18 lb. (8.16 kg)

#### FW MURPHY PRODUCTION CONTROLS

SALES, SERVICES & ACCOUNTING  
4646 S. HARVARD AVE.  
TULSA, OK 74135

CONTROL SYSTEMS & SERVICES  
105 RANDON DYER ROAD  
ROSENBERG, TX 77471

MANUFACTURING  
5757 FARINON DRIVE  
SAN ANTONIO, TX 78249

#### DOMESTIC SALES & SUPPORT

FW MURPHY PRODUCTS  
PHONE: 918 957 1000  
EMAIL: INFO@FWMURPHY.COM  
WWW.FWMURPHY.COM

FW MURPHY CONTROL SYSTEMS & SERVICES  
PHONE: 281 633 4500  
EMAIL: CSS-SOLUTIONS@FWMURPHY.COM

#### INTERNATIONAL SALES & SUPPORT

CHINA  
PHONE: +86 571 8788 6060  
EMAIL: INTERNATIONAL@FWMURPHY.COM

LATIN AMERICA & CARIBBEAN  
PHONE: +1 918 770 8775  
EMAIL: INTERNATIONAL@FWMURPHY.COM

SOUTH KOREA  
PHONE: +82 70 7951 4100  
EMAIL: INTERNATIONAL@FWMURPHY.COM



FM 668576 (San Antonio, TX - USA)  
FM 668933 (Rosenberg, TX - USA)



FM 523851 (China) TS 589322 (China)